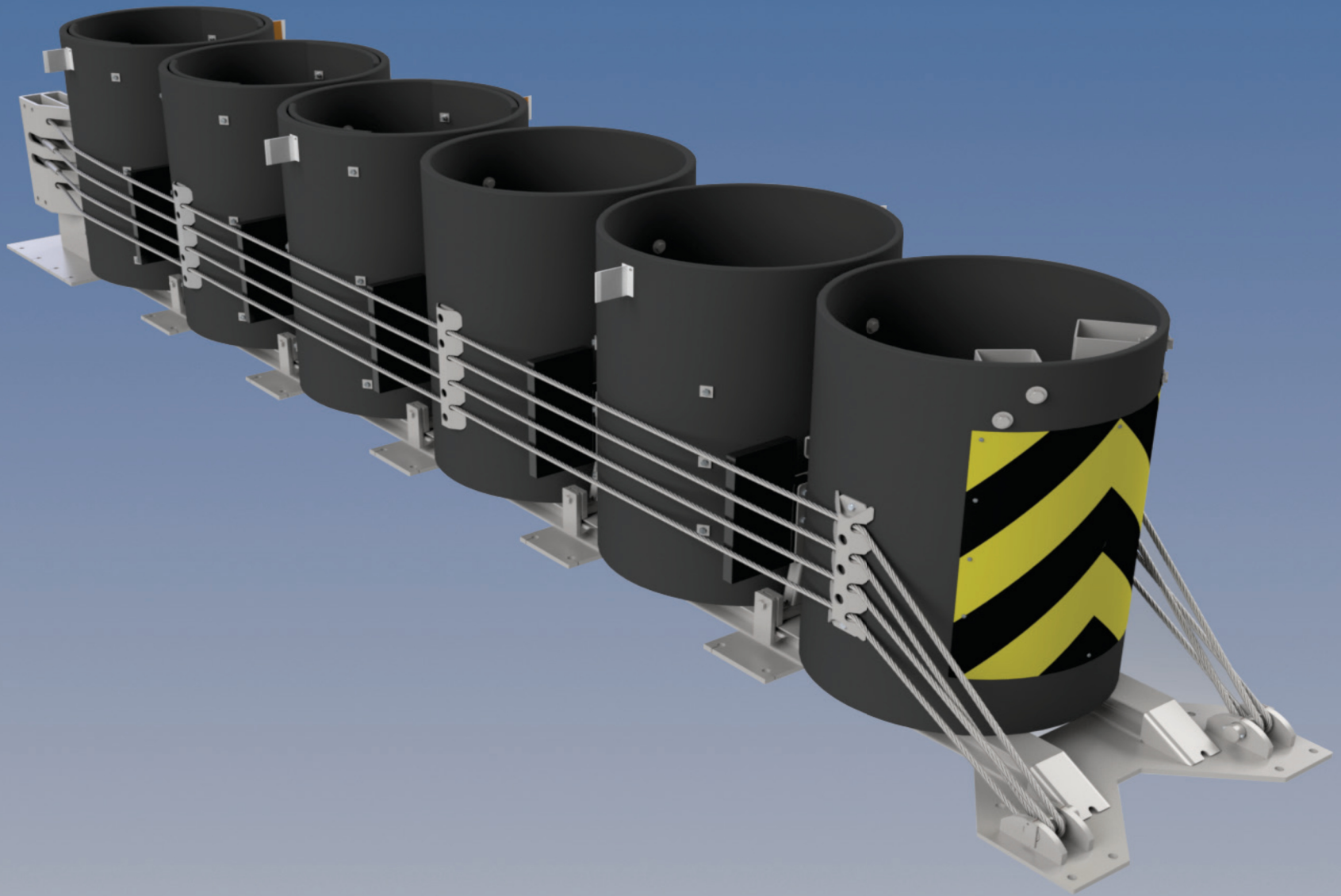
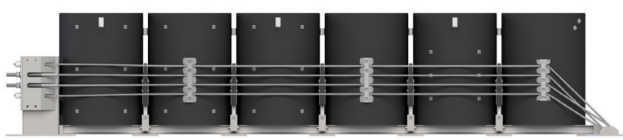


Crash Cushions



REACT™ M



TRINITY
HIGHWAY
Ahead of the Curve®

REACT™ M

The REACT™ M system is a redirective, non-gating, crash cushion that consists of six high density polyethylene (HDPE) cylinders attached to a steel backup and basetrack assembly. It is tested to MASH 16 Test Level 3.

The REACT™ M system includes a self-contained backup structure that is designed to resist movement during head-on and side impacts and can protect hazards up to 30" (762 mm) wide. The REACT™ M system has shown self-restoring characteristics when impacted within MASH 16 crash test standards.*

Backup Structure and Attachments

- Self-contained, steel backup
- Portable or permanent concrete barrier(s)
- Bridge pier(s)
- Bridge parapet(s)
- Square block(s)

Features

- HDPE cylinders.
- Various cylinder wall thicknesses designed to help withstand impact by light cars or heavier, high-center-of-gravity vehicles.

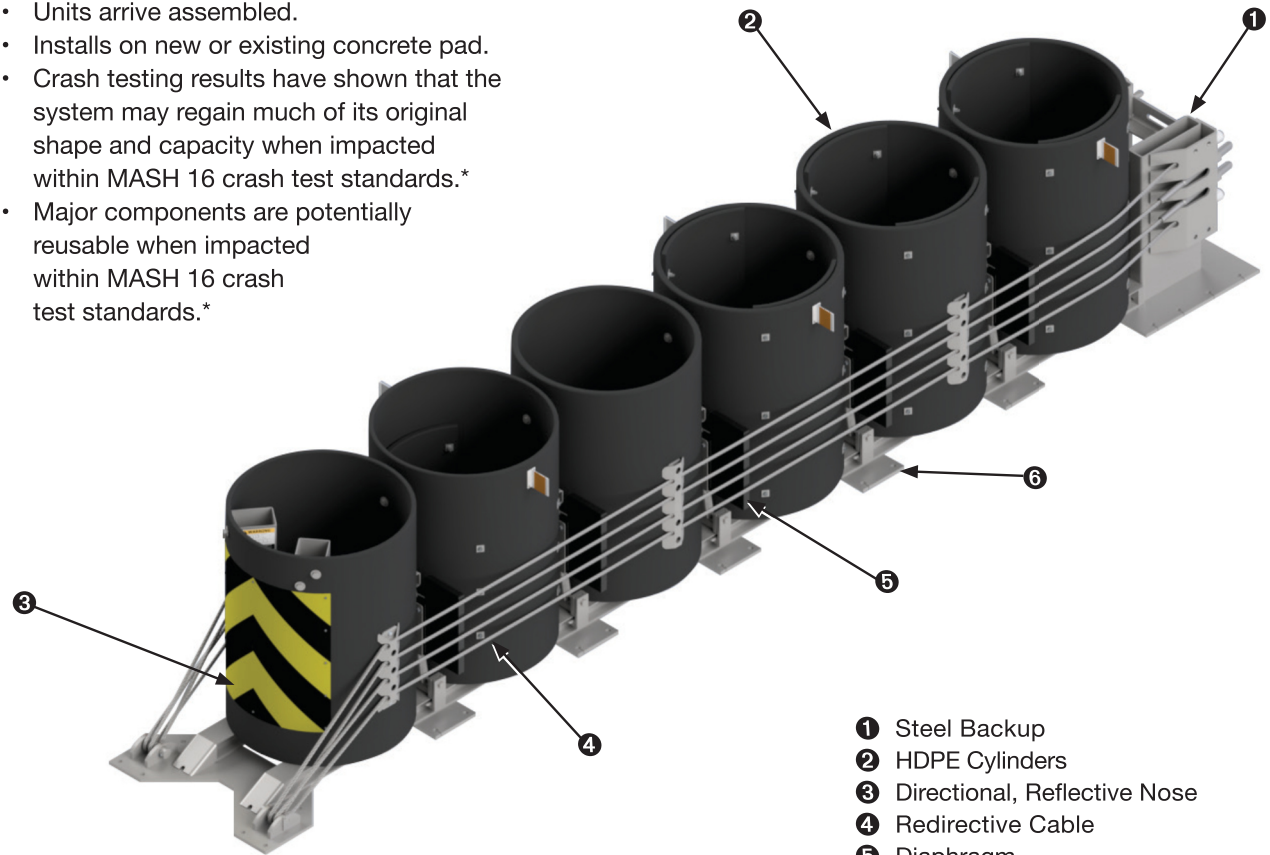
Assembly and Maintenance

- Units arrive assembled.
- Installs on new or existing concrete pad.
- Crash testing results have shown that the system may regain much of its original shape and capacity when impacted within MASH 16 crash test standards.*
- Major components are potentially reusable when impacted within MASH 16 crash test standards.*

Specifications

Test Level 3 System

- Length: 22'-2 3/4" (6.78 m)
- Cylinder Width (w/Cable Guides): 38 3/4" (0.98 m)
- Base Track Width: 41 3/4" (1.06 m)
- Height: 52 3/4" (1.34 m)



An original  ENERGY ABSORPTION SYSTEMS, INC. product.

Distributed by:

 **Coral Sales Co.**
Highway Safety Solutions

P. 503-655-6351 » F. 503-657-9649

www.coralsales.com

PO Box 22385 Portland, OR 97269-2385

1-21

www.trinityhighway.com
1.888.323.6374

